

# APARTMENT 29

2 bedroom | First Floor

Total Area: 76 sq m (818 sq ft)

## Kitchen

4.95m x 2.40m  
(16'3" x 7'10")

## Living / Dining

4.95m x 3.22m  
(16'3" x 10'7")

## Bedroom 1

3.34m x 3.79m  
(10'11" x 12'5")

## Ensuite

2.20m x 2.10m  
(7'3" x 6'11")

## Bedroom 2

3.09m x 3.32m  
(10'2" x 10'11")

## Bathroom

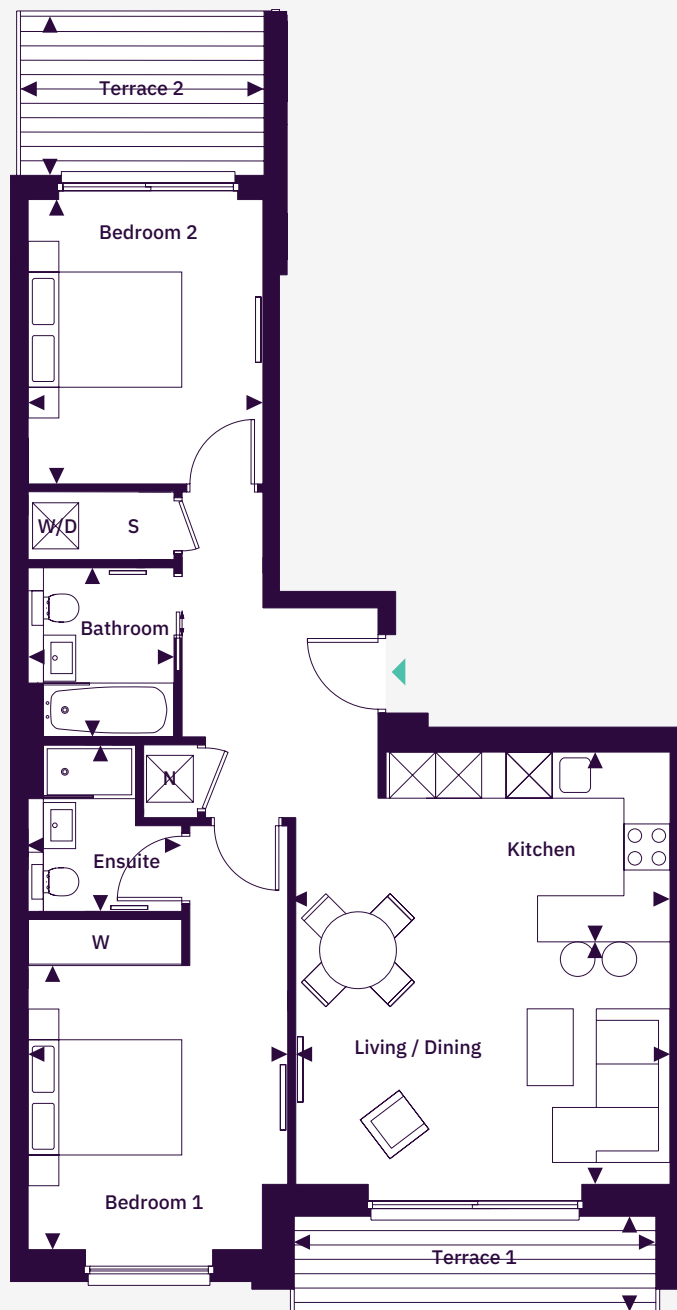
1.90m x 2.19m  
(6'3" x 7'2")

## Terrace 1

4.71m x 1.24m  
(15'5" x 4'1")

## Terrace 2

3.17m x 2.10m  
(10'5" x 6'11")



North ↑

## Key

S Storage

W Wardrobe

N Nibe Air Source Heat Pump

W/D Washer/Dryer

## Location

Ground Floor

